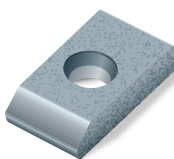
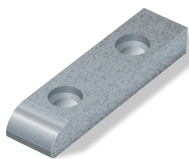


PeriGrind



Extended possibilities with the periphery grinding rim



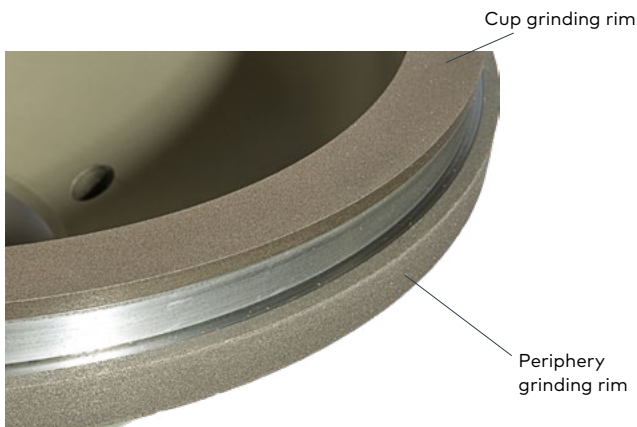
AGATHON

Extended possibilities with the periphery grinding rim

The PeriGrind option opens up all possibilities of the combined use of cup-type and periphery grinding rims in one set-up. You can extend your process options without abandoning the benefits of the highly productive cup-shaped grinding wheel.

Features

- Grinding with line contact with the periphery grinding rim
- The periphery rim can be built up individually or in combination with the cup-type grinding rim
- Dressing of the periphery rim is done with the external CombiDress dressing device
- Consistent extension of the programming syntax for grinding planes, splines and chamfers with the periphery rim
- Measuring option with existing measuring probe for rim thickness compensation
- Dressing control for periphery grinding rim with specific call or interval control
- Available for Evo Combi and Evo Penta



Advantages and benefit

Advantages

- Easy and efficient grinding of various geometries
- Capability to grind concave shapes
- The syntax enables planes, splines and chamfers to be easily ground
- Effective extension of the proven Agathon programming language with little training
- Transparent consideration of compensations/corrections
- Stable production thanks to dressing control
- Easy to retrofit

Benefit

- Especially suitable for the production of module inserts with concave radii and chamfers in one set-up
- Additional applications for existing machines, also for Combi Plus and Penta Plus series
- More flexible utilization of your existing production capacity through extended possibilities



sales@agathon.ch | www.agathon.ch